

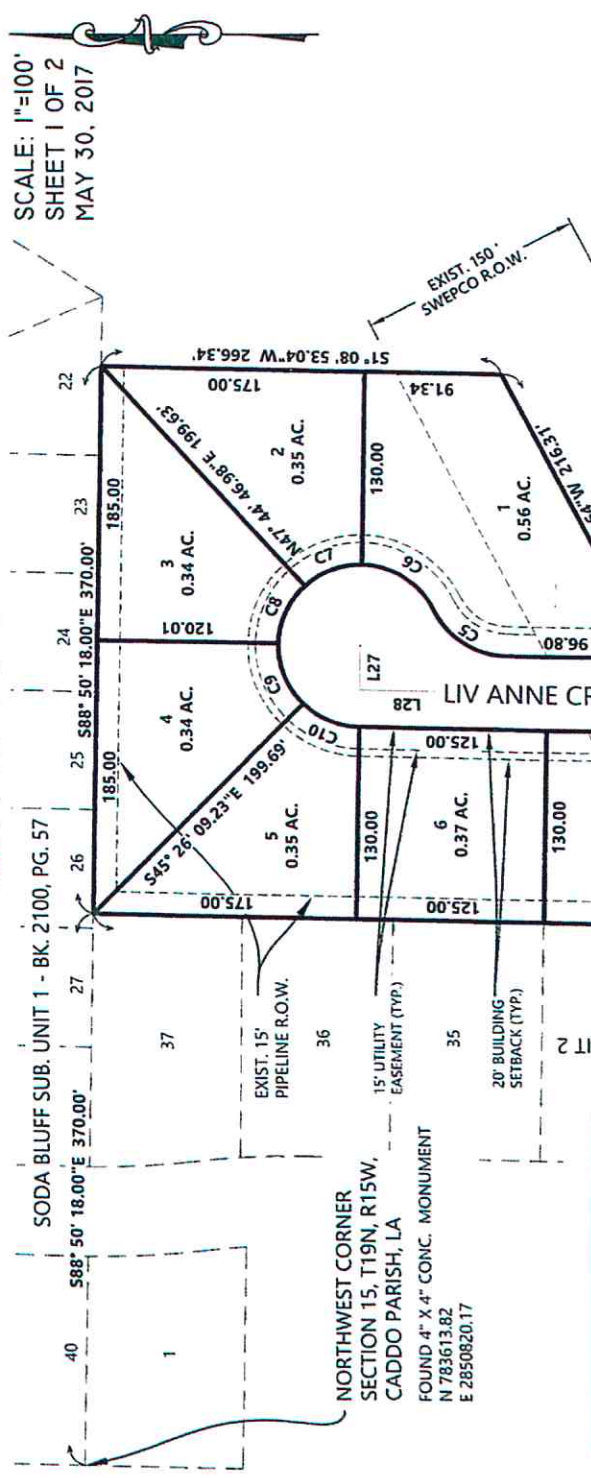
1935A

Exhibit A

1003

NEW TERRITORY SUBDIVISION UNIT VI

A SUBDIVISION OF 13.23 ACRES IN SECTION 15, T19N-R15W, CADDO PARISH, LA.



SCALE: 1"=100'
SHEET 1 OF 2
MAY 30, 2017

Mike Spence, Caddo Clerk of Court

CURVE TABLE			
CURVE #	LENGTH	RADIUS	DELTA
C2	66.62'	80.00'	47.71°
C3	76.54'	100.00'	45.00°
C4	73.81'	100.00'	42.29°
C5	60.44'	55.00'	62.96°
C6	60.43'	55.00'	62.70°
C7	41.68'	55.00'	43.66°
C8	43.73'	55.00'	45.71°
C9	45.72'	55.00'	47.48°
C10	41.66'	55.00'	43.40°
C11	60.41'	73.45'	61.43°
C12	45.80'	55.00'	47.71°
C13	38.09'	25.00'	87.29°
C14	10.94'	125.00'	5.02°
C15	76.90'	125.00'	35.25°
C16	10.33'	125.00'	4.74°
C18	40.45'	25.00'	92.71°
C19	55.36'	75.00'	42.29°
C20	33.85'	124.74'	15.55°
C21	25.24'	124.74'	11.60°
C34	107.22'	100.00'	61.43°
C35	109.91'	125.00'	50.38°
C36	48.52'	30.00'	92.67°
C37	58.90'	75.00'	45.00°
C38	33.17'	125.00'	15.20°

LINE TABLE		
LINE #	LENGTH	DIRECTION
L27	30.00'	N88° 50' 18.00"W
L28	215.58'	N1° 08' 53.04"E
L29	107.82'	NG2° 34' 45.10"E
L30	62.30'	S88° 51' 06.96"E
L31	471.84'	S41° 08' 29.78"E
L32	56.85'	N46° 08' 53.04"E
L33	199.68'	N1° 08' 53.04"E
L34	20.79'	S1° 08' 53.04"W
L35	1.76'	S88° 51' 06.96"E
L36	9.16'	N46° 08' 53.04"E
L37	4.43'	N46° 08' 53.04"E
L38	7.50'	S1° 08' 53.04"W
L39	7.50'	N1° 08' 53.04"E

DEDICATION: THE UNDERSIGNED OWNER HEREBY DEDICATES TO THE PUBLIC FOR PUBLIC USE THE STREETS AS SHOWN. THE UNDERSIGNED OWNER HEREBY GRANTS UNTO THE TOWN OF BLANCHARD, AEP SWEPSCO, BELL SOUTH TELEPHONE COMPANY, ARKLA GAS, MACCO COMMUNICATIONS AND/OR ANY OTHER UTILITY, PUBLIC OR PRIVATE, THEIR RESPECTIVE SUCCESSORS AND ASSIGNS, EXCLUSIVELY AND IN PERPETUITY AS A COVENANT RUNNING WITH THE LAND THE RIGHT TO GO UPON THE SEVITUDES FOR UTILITIES HEREIN ESTABLISHED TO INSTALL, MAINTAIN, AND REMOVE FACILITIES APPROPRIATE TO THEIR SERVICES; TO HAVE INGRESS AND EGRESS THERETO OVER ADJACENT LOTS AND LAND; AND/OR CUT AND REMOVE TREES OR OTHER OBSTRUCTIONS AS MAY INTERFERE WITH OR ENDANGER LIFE OR THE OPERATION OF SUCH FACILITIES OR THEIR EFFICIENCY; AND FURTHER AGREES TO HOLD HARMLESS THE PARISH OF CADDO FROM DAMAGES DUE TO CHANGES IN THE STREET GRADES. BINDING HEREIN THEIR HEIRS, SUCCESSORS, AND ASSIGNS

RECORD OWNERS:
KEN LAWLER BUILDERS, INC.

Ken Lawler
KENNETH G. LAWLER
PRESIDENT

Mitchell E. Griffin
MITCHELL E. GRIFFIN

APPROVAL: *[Signature]*
MAYOR, TOWN OF BLANCHARD

David M. Shaw
CADDO PARISH
DIRECTOR OF PUBLIC WORKS

APPROVAL OF THIS PLAT BY THE PARISH OF CADDO DOES NOT CONSTITUTE AN ACCEPTANCE BY THE PARISH OF CADDO, OR THE PUBLIC, OF ANY OR THE PUBLIC, OF ANY STREETS, DRAINAGE OR OTHER RIGHTS OF WAYS AS SHOWN ON THIS PLAT. ALL STREETS AND ALL DRAINAGE SHALL BE IN ACCORDANCE AND COMPLIANCE WITH CHAPTER 22 OF THE CODE OF ORDINANCES OF THE PARISH OF CADDO. IN ACCORDANCE WITH L.A. R.S. 33:5051c.(1), THE APPROVAL OF THIS PLAT SHALL NOT CONSTITUTE ACCEPTANCE BY THE PUBLIC OF ANY STREET OR OTHER PUBLIC, WAY, PARK OR SPACE. SUCH APPROVAL CAN ONLY BE EFFECTED BY ACTION OF THE CADDO PARISH COMMISSION. BEARINGS ARE BASED UPON PLAT RECORDED IN BOOK 2300, PAGES 126-127, INCLUSIVE. PER FIRM PANEL 22017C 0270H, DATED MAY 19, 2014, THIS SUBDIVISION IS IN ZONE X.



D. B. GRAFF
REG. NO. 47355

DBG
08-23-17

NOTES:

1. HEREBY CERTIFY THAT THIS SUBDIVISION PLAT CONFORMS TO ALL REGULATIONS AND REQUIREMENTS OF THE SUBDIVISION ORDINANCE AND AMENDMENTS THERETO AS ADOPTED BY THE CADDO PARISH COMMISSION EXCEPT AS RELATED TO ROADS AND DRAINAGE; AND, THAT THIS MAP REPRESENTS AN ACTUAL GROUND SURVEY BY ME OR UNDER MY SUPERVISION.

08-23-17

935b

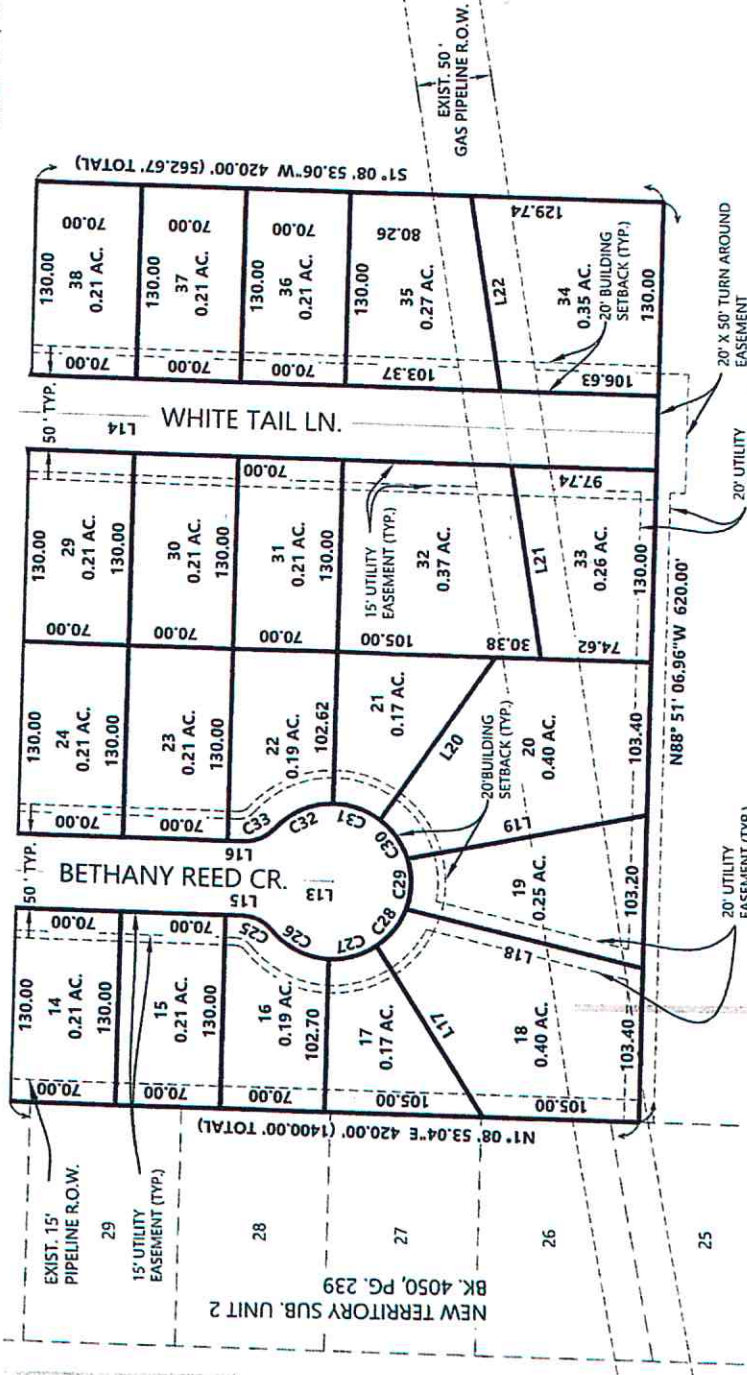
Exhibit A

NEW TERRITORY SUBDIVISION UNIT VI

A SUBDIVISION OF 13.23 ACRES IN SECTION 15, T19N-R15W,
CADDO PARISH, LA.

9000
4

SCALE: 1"=100'
SHEET 2 OF 2
MAY 30, 2017



Mike Spence, Caddo Clerk of Court
27NOV20

NOTE:
SET 1/2" * 18" IRON ROD AT ALL CORNERS.

LINE #	LENGTH	DIRECTION
L13	211.17'	N1° 08' 53.04"E
L14	427.50'	N1° 08' 53.04"E
L15	11.92'	N1° 08' 53.04"E
L16	11.92'	N1° 08' 53.04"E
L17	134.41'	S58° 04' 23.88"W
L18	163.25'	S13° 23' 33.19"W
L19	163.22'	S11° 05' 47.12"E
L20	134.34'	S55° 46' 37.80"E
L21	132.04'	S81° 03' 58.71"W
L22	132.04'	S81° 03' 58.71"W

CURVE #	LENGTH	RADIUS	DELTA
C26	44.39'	52.35'	48.58°
C27	33.75'	52.35'	36.94°
C28	32.11'	52.35'	35.14°
C29	34.59'	52.35'	37.86°
C30	32.14'	52.35'	35.18°
C31	33.79'	52.35'	36.99°
C32	44.46'	52.35'	48.66°
C33	24.07'	27.76'	49.68°
C25	21.78'	25.12'	49.68°

DEDICATION: THE UNDERSIGNED OWNER HEREBY DEDICATES TO THE PUBLIC FOR PUBLIC USE THE STREETS AS SHOWN. THE UNDERSIGNED OWNER HEREBY GRANTS UNTO THE TOWN OF BLANCHARD, AEP SWPCO, BELL SOUTH TELEPHONE COMPANY, ARKLA GAS, MACCO COMMUNICATIONS AND/OR ANY OTHER UTILITY, PUBLIC OR PRIVATE, THEIR RESPECTIVE SUCCESSORS AND ASSIGNS, EXCLUSIVELY AND IN PERPETUITY AS A COVENANT RUNNING WITH THE LAND THE RIGHT TO GO UPON THE SEVITUDES FOR UTILITIES HEREIN ESTABLISHED TO INSTALL, MAINTAIN, AND REMOVE FACILITIES APPROPRIATE TO THEIR SERVICES; TO HAVE INGRESS AND EGRESS THERETO OVER ADJACENT LOTS AND LAND; AND/OR CUT AND REMOVE TREES OR OTHER OBSTRUCTIONS AS MAY INTERFERE WITH OR ENDANGER LIFE OR THE OPERATION OF SUCH FACILITIES OR THEIR EFFICIENCY; AND FURTHER AGREES TO HOLD HARMLESS THE PARISH OF CADDO FROM DAMAGES DUE TO CHANGES IN THE STREET GRADES, BINDING HEREIN THEIR HEIRS, SUCCESSORS, AND ASSIGNS.

RECORD OWNERS:
KEN LAWLER BUILDERS, INC.
Ken Lawler
KENNETH G. LAWLER 8/22/17
PRESIDENT DATE
MITCHELL GRIFFIN 08-23-17
DATE

APPROVAL: *[Signature]* 9/18/17
MAYOR, TOWN OF BLANCHARD DATE

[Signature] 7-18-18
CADDO PARISH DIRECTOR OF PUBLIC WORKS DATE

APPROVAL OF THIS PLAT BY THE PARISH OF CADDO DOES NOT CONSTITUTE AN ACCEPTANCE BY THE PARISH OF CADDO, OR THE PUBLIC, OF ANY OR THE PUBLIC, OF ANY STREETS, DRAINAGE OR OTHER RIGHTS OF WAYS AS SHOWN ON THIS PLAT. ALL STREETS AND ALL DRAINAGE SHALL BE IN ACCORDANCE AND COMPLIANCE WITH CHAPTER 22 OF THE CODE OF ORDINANCES OF THE PARISH OF CADDO. IN ACCORDANCE WITH L.A. R.S. 33:5051c.(1), THE APPROVAL OF THIS PLAT SHALL NOT CONSTITUTE ACCEPTANCE BY THE PUBLIC OF ANY STREET OR OTHER PUBLIC WAY, PARK OR SPACE. SUCH APPROVAL CAN ONLY BE EFFECTED BY ACTION OF THE CADDO PARISH COMMISSION. BEARINGS ARE BASED UPON PLAT RECORDED IN BOOK 2300, PAGES 126-127, INCLUSIVE. PER FIRM PANEL 22017C 0270H, DATED MAY 19, 2014, THIS SUBDIVISION IS IN ZONE X.

NOTES:

1. HEREBY CERTIFY THAT THIS SUBDIVISION PLAT CONFORMS TO ALL REGULATIONS AND REQUIREMENTS OF THE SUBDIVISION ORDINANCE AND AMENDMENTS THERETO AS ADOPTED BY THE CADDO PARISH COMMISSION EXCEPT AS RELATED TO ROADS AND DRAINAGE; AND, THAT THIS MAP REPRESENTS AN ACTUAL GROUND SURVEY BY ME OR UNDER MY SUPERVISION, AND MEETS THE MINIMUM STANDARDS FOR A CLASS C



[Signature] 08.08.17