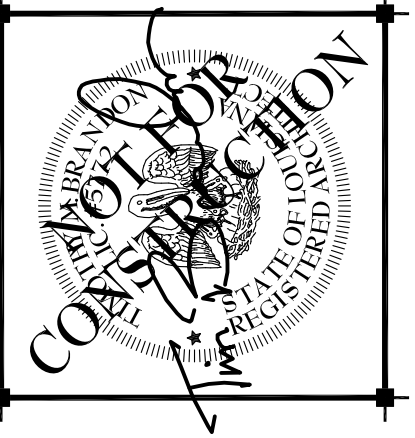
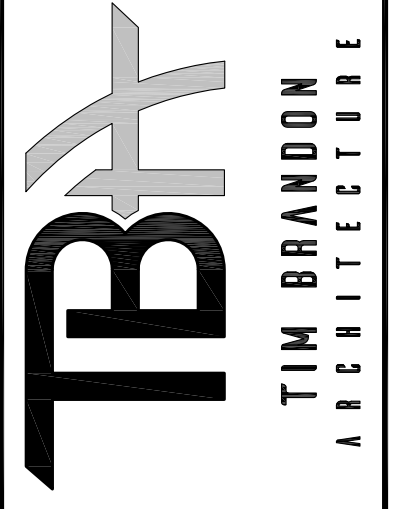




PROPOSED FLOOR PLAN
 SCALE: 1/4"=1'-0" SQUARE FOOTAGE: 6,600 SF

Timothy M. Brandon
 Architect APC
 2250 Hospital Drive
 Suite 116
 Bossier City, LA 71111
 Tel. 318.742.4675
 Fax. 318.742.4985
 www.tbstudio.com



PROJECT:
**NEW BUILDING FOR
 VETERAN'S AFFAIRS & DRUG COURT**
 1031 CRESWELL AVENUE
 SHREVEPORT, LA 71101

DRAWING REVISIONS	
DATE	DESCRIPTION

Drawn By: MEY
 Checked By: LKP
 SHEET

A1.02

Date: OCTOBER 2020

TBA Proj. No.: --
 File Name:

DESCRIPTION:
 FLOOR PLAN